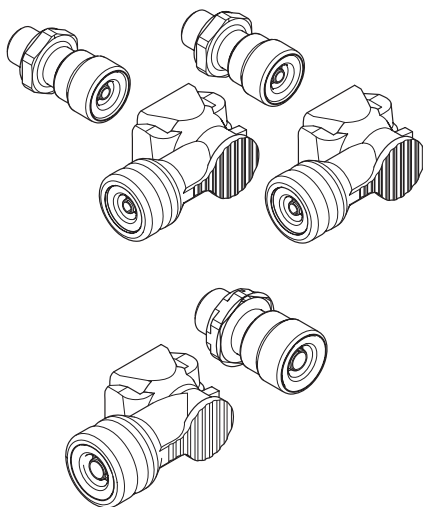


# MOUNTING INSTRUCTION

2025-02-04 38-363800a



## 29-049700



- 
- |           |   |           |  |
|-----------|---|-----------|--|
| <b>DE</b> | Ventilkasten Anschlutzsatz              | <b>LV</b> | Vārstu kārbas gaisa padeves pieslēgvietu komplekts |
| <b>DK</b> | Ventilboks nippelsæt                    | <b>NL</b> | Luchtaansluitset kleppenkast                       |
| <b>EE</b> | Ventilikaarbi õhukonnectori komplekt    | <b>NO</b> | Ventilboks nippelsett                              |
| <b>FI</b> | Venttiilikotelon nännisarja             | <b>PL</b> | Zestaw złączy powietrza skrzynki zaworowej         |
| <b>FR</b> | Boîte à vannes, kit de connecteur d'air | <b>RU</b> | Комплект воздушного соединения для блока клапанов  |
| <b>GB</b> | Valve box air connector kit             | <b>SE</b> | Luftnippelsats till ventillåda                     |



Montering  
Montage  
Mounting  
Paigaldus

Asennus  
Montage  
Montážas  
Montage

Montering  
Montażowa  
монтажу  
Montering



Afmontering  
Demontage  
Dismantling  
Demonteerimine

Purkaminen  
Démontage  
Demontāža  
Demontage

Demontering  
Demontaž  
Демонтаж  
Demontering



Funktionskontrol  
Funktionskontrolle  
Function check  
Talitluskontroll

Toiminnan tarkastus  
Vérification des fonctions  
Darbības pārbaude  
Funcțiecontrol

Funksjonskontroll  
Kontrola działania  
Контроль функций  
Funktionskontroll



Klemmgefahr!  
Klemmerisiko!  
Muljumisoht!  
Puristumisvaara!

Risque d'écrasement!  
Pinch point!  
Traumu risks!  
Risico op beknelling!

Klemfare!  
Ryzyko zakleszczenia!  
Риск защемления!  
Klämrisk!

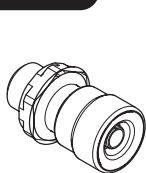


Visuelle Kontrolle  
Visuel kontrol  
Visuaalne kontroll  
Silmämääräinen tarkastus

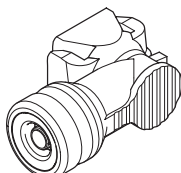
Contrôle visuel  
Visual check  
Vizuālā pārbaude  
Visuele controle

Visuell kontroll  
Kontrola wzrokowa  
Визуальный контроль  
Visuell kontroll

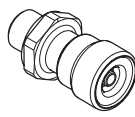
**29-049700**



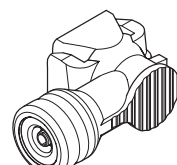
x1  
Ø 8



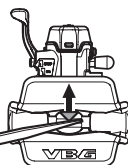
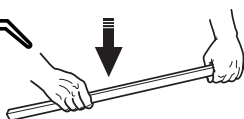
x1  
Ø 8



x2  
Ø 6



x2  
Ø 6



DE

## Allgemeines

Vor der Montage alle Teile identifizieren. Montage und Wartung müssen sorgfältig und fachmännisch durchgeführt werden.

DK

## Generelt

Kontroller at alle dele er til stede inden montering. Montering og service skal foretages omhyggeligt og fagmæssigt.

EE

## Üldist

Määratlege kõik osad enne monteerimist. Paigaldus ja hooldus tuleb teostada hoolikalt ja professionaalselt.

FI

## Yleistä

Tunnista kaikki osat ennen asennusta. Asennus ja huolto on suoritettava huolellisesti ja ammattimaisesti.

FR

## Généralités

Le montage et l'entretien doivent être effectués avec le plus grand soin et selon les règles de l'art.

GB

## General

Identify all parts before installation. Installation and service shall be carried out carefully and professionally.

LV

## Vispārēja informācija

Pirms montāžas identificējiet visas detaļas. Montāža un serviss ir jāveic rūpīgi un profesionāli.

NL

## Algemeen

Voer de montage moet u alle onderdelen identificeren. Voer montage en service zorgvuldig en deskundig uit.

NO

## Generelt

Identifiser alle deler før montering. Montering og service skal utføres nøyaktig og fagmessig.

PL

## Informacje ogólne

Zapoznaj się z poszczególnymi częściami przed przystąpieniem do montażu. Czynności montażowe i serwisowe należy wykonywać dokładnie i fachowo.

RU

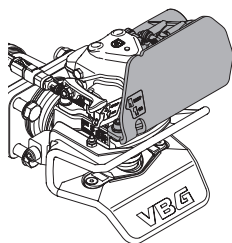
## Общая информация

Перед монтажом проверьте наличие всех деталей. Монтаж и обслуживание должны осуществляться тщательно и профессионально.

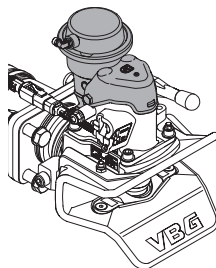
SE

## Allmänt

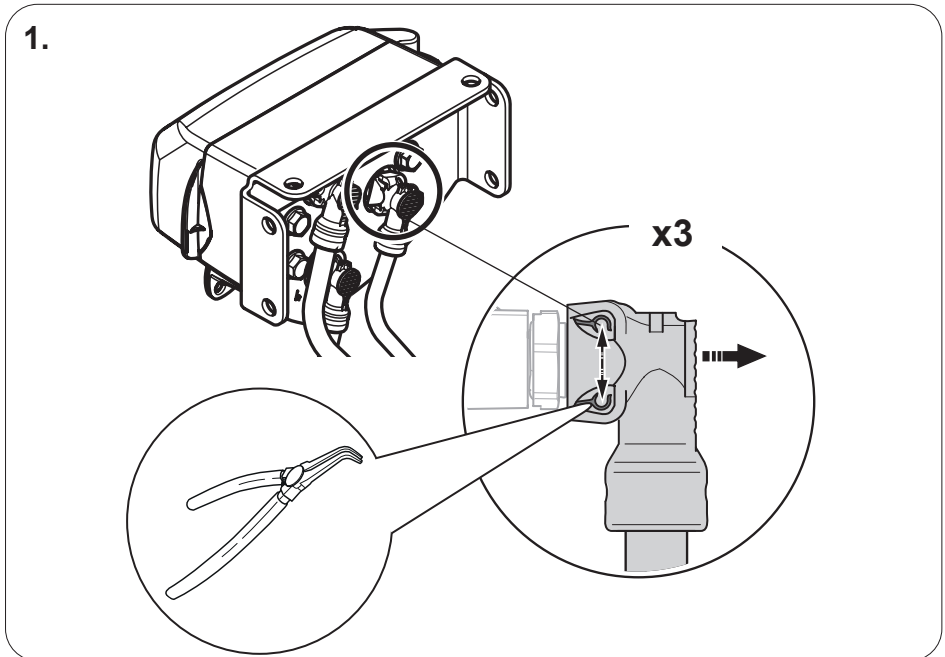
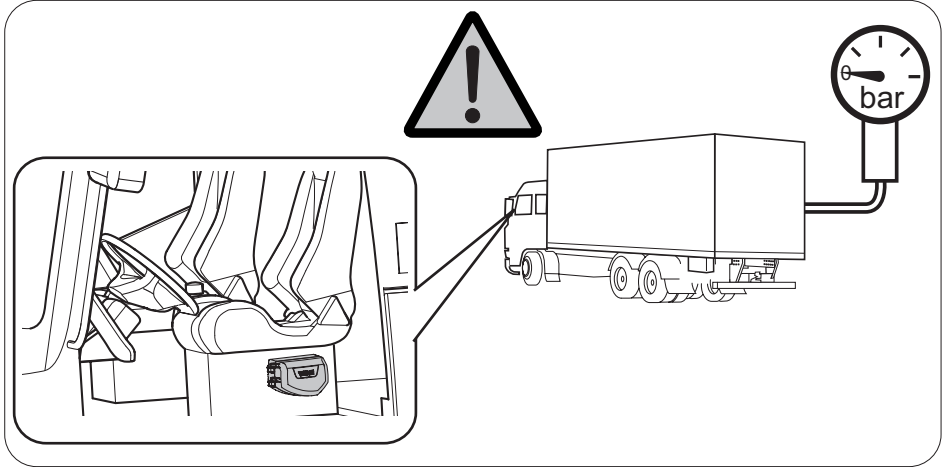
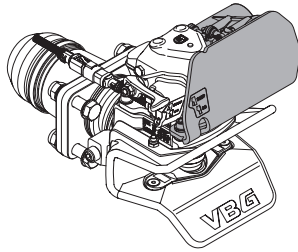
Identifiera alla delar före montering. Montering och service skall utföras noggrant och fackmannamässigt.



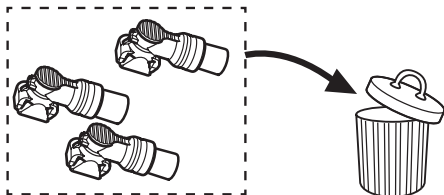
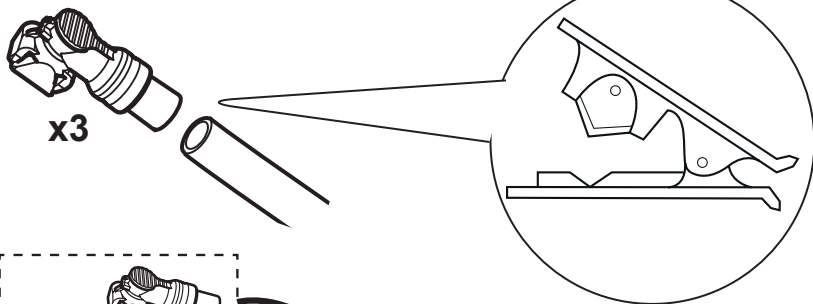
.....4



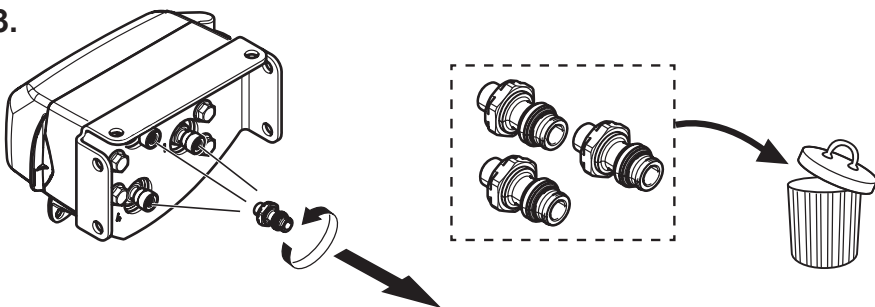
.....8



2.

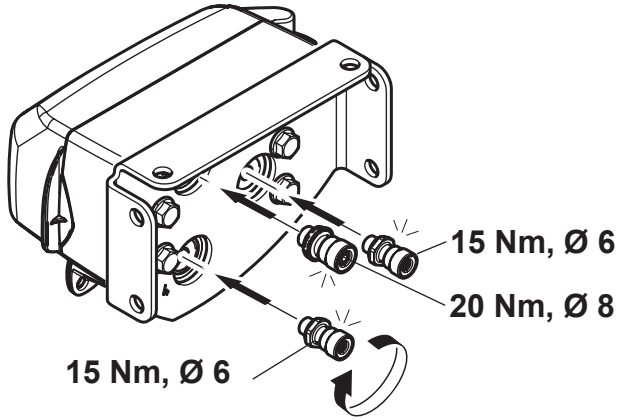


3.

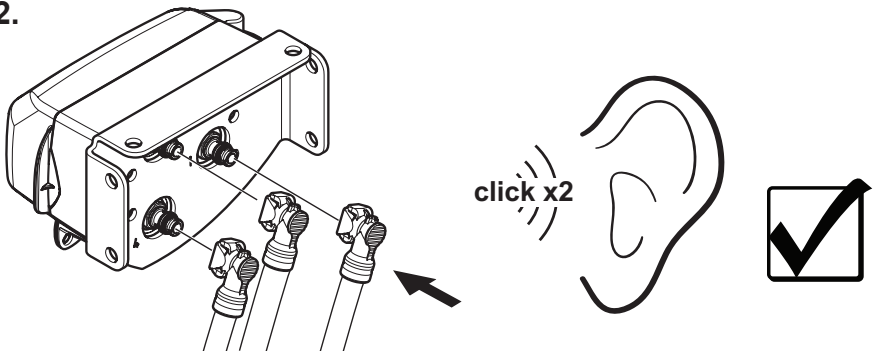




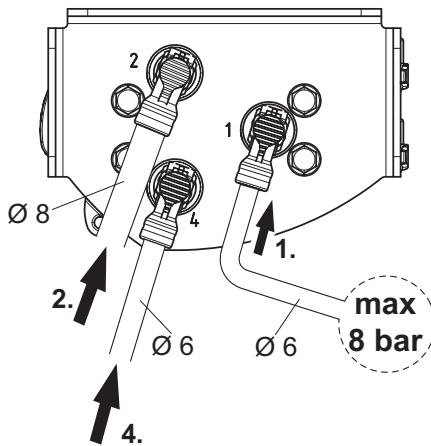
1.



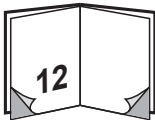
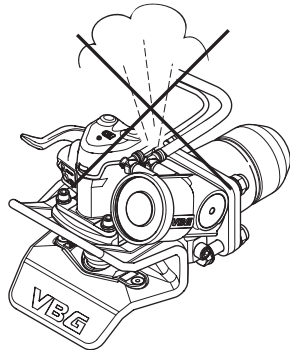
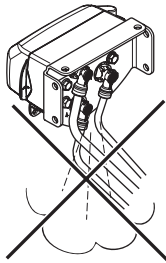
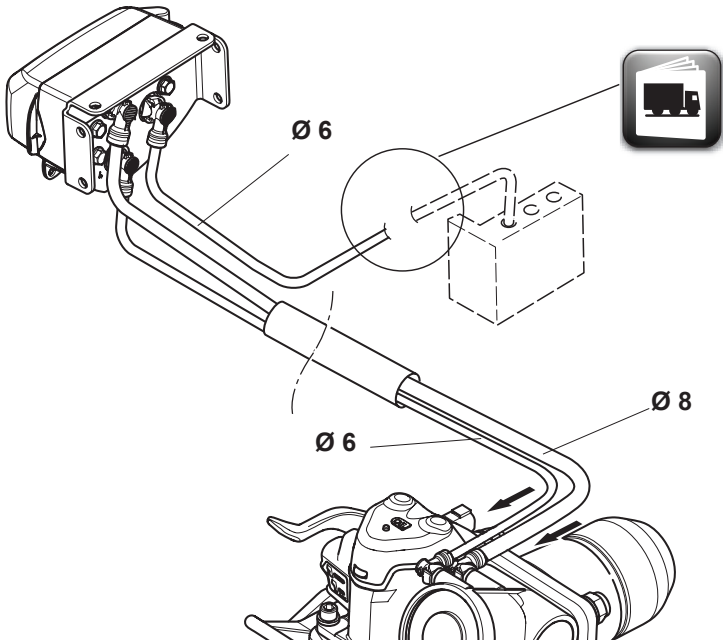
2.

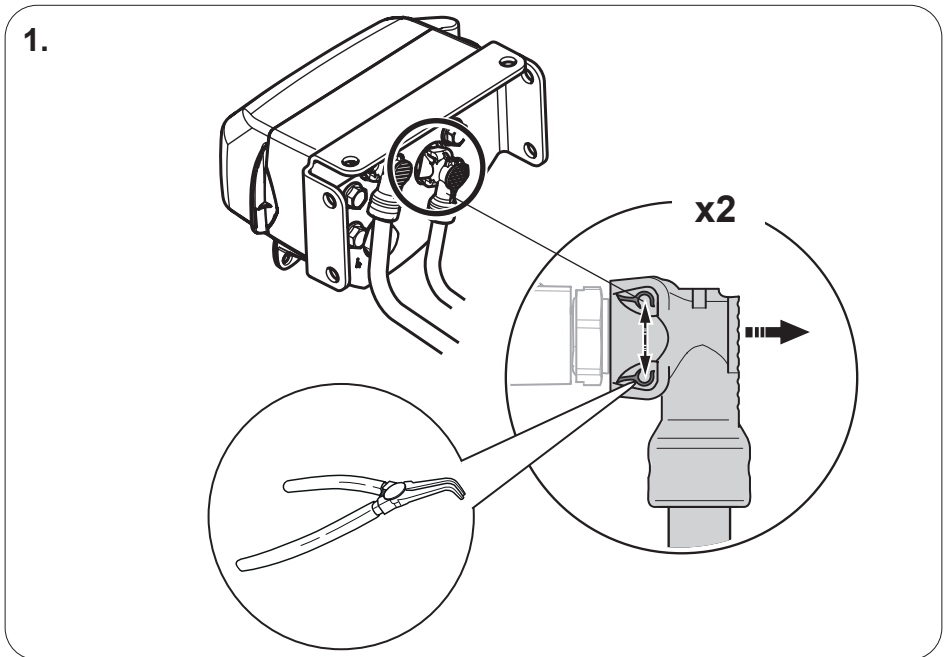
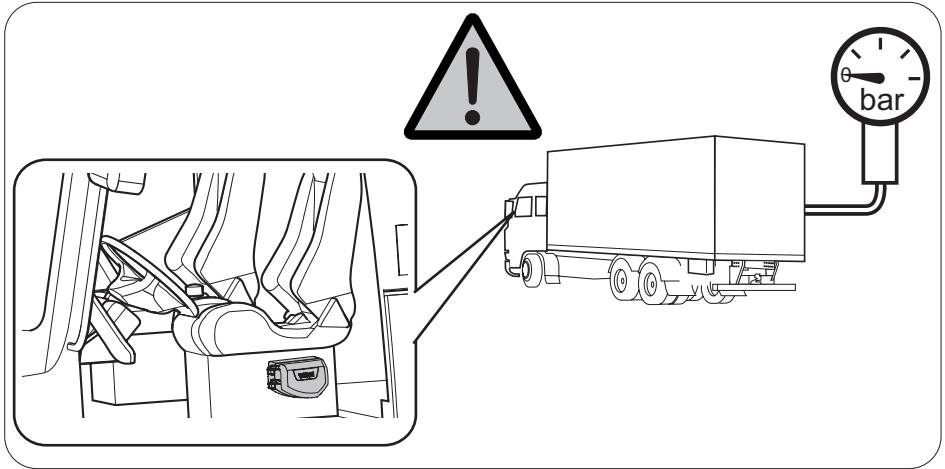
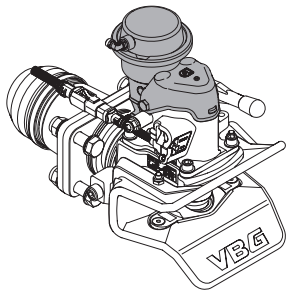


3.



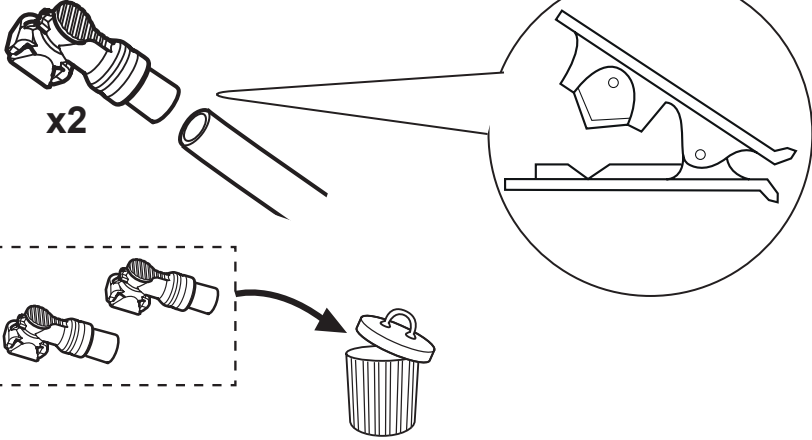
4.



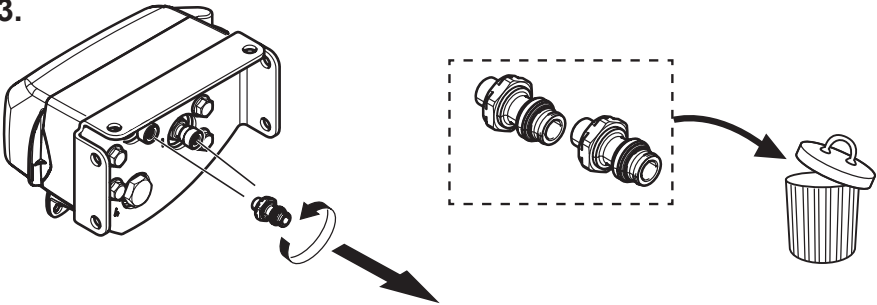




2.

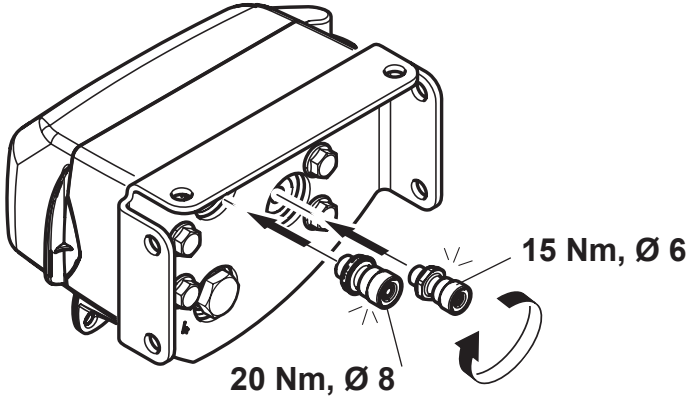


3.

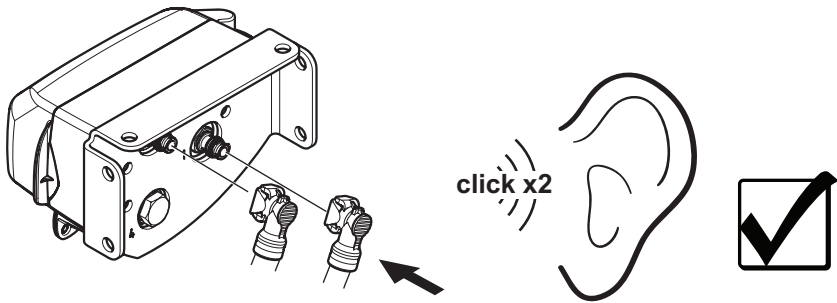




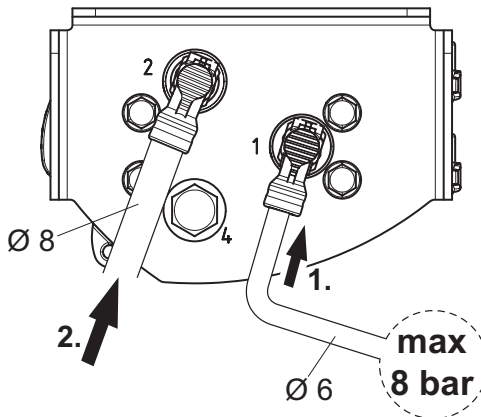
1.



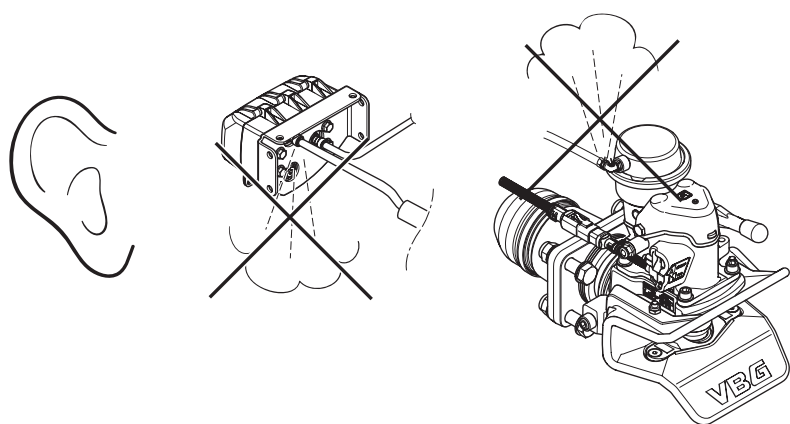
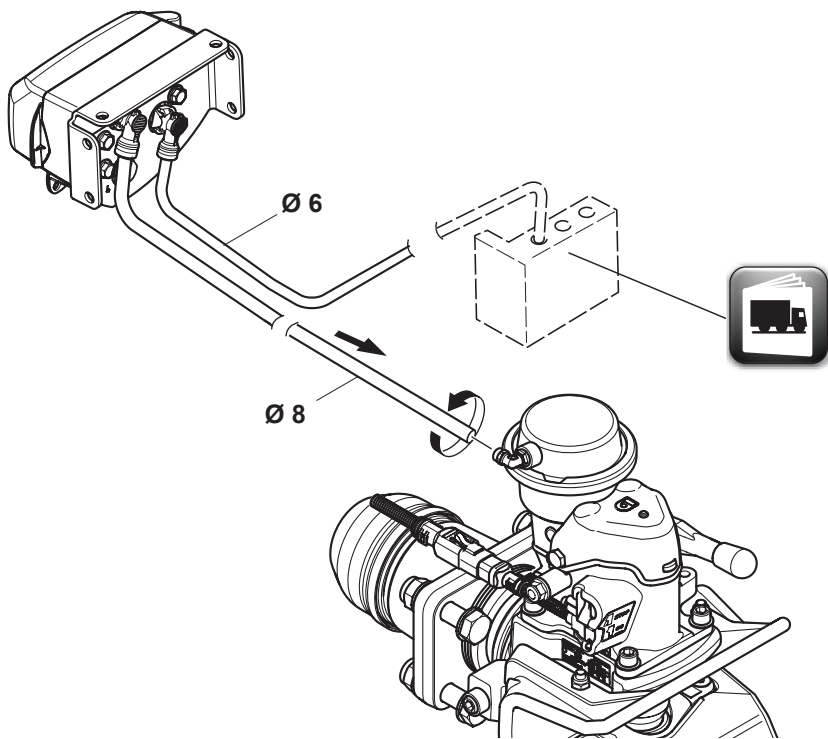
2.

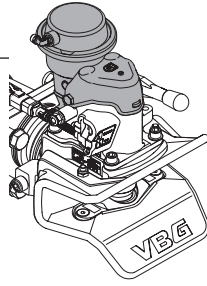
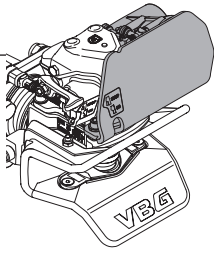


3.

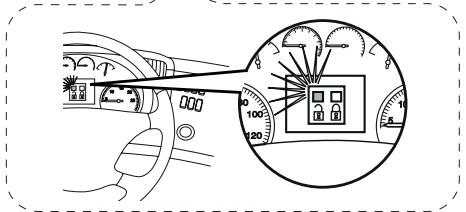
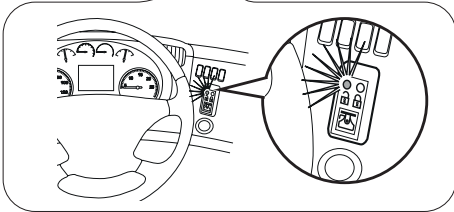
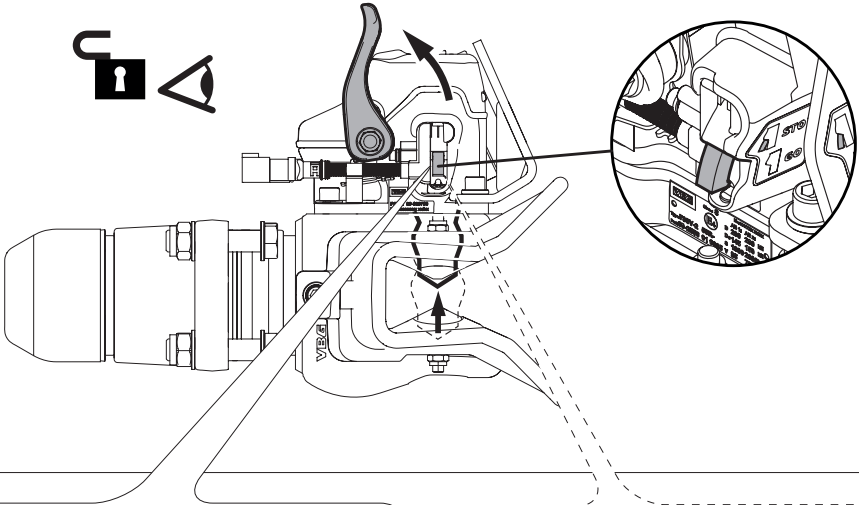


4.

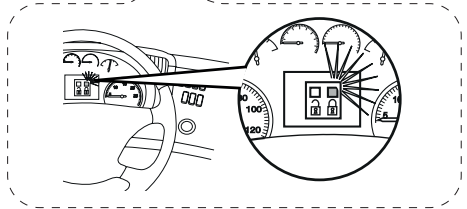
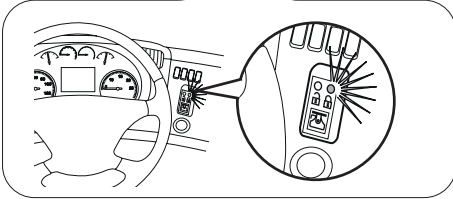
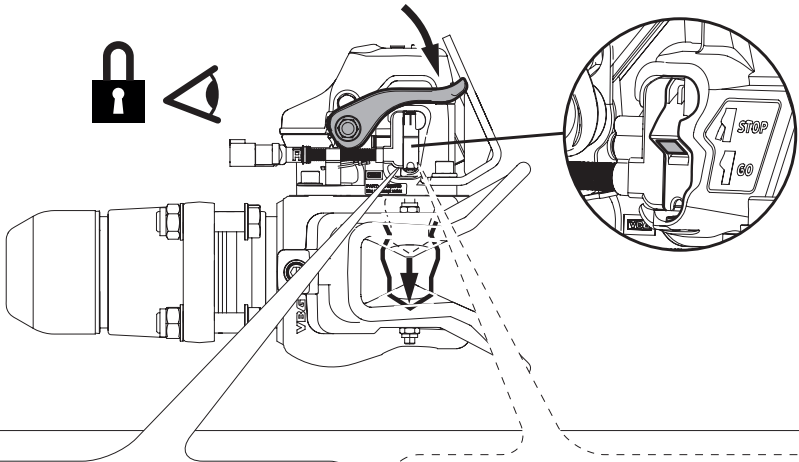
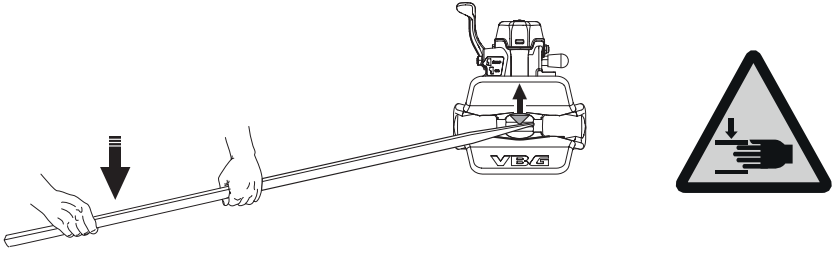




1.



2.







Member of VBG Group

[www.vbg.eu](http://www.vbg.eu)



**The strong connection**